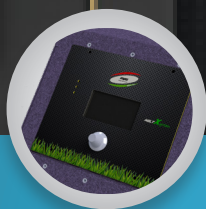


M20 Margherita Sprint Series

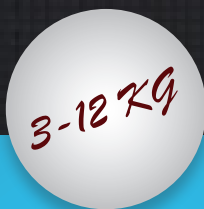
Pneumatic Hot Melt applicator

Since the first roll out of first series Margherita had been the perfect solution for strong and reliable requirement applications. Now with Sprint Series, Margherita introduce a new standard for gluing applications: Economical, precise, durable and on demand.



DIO HMI

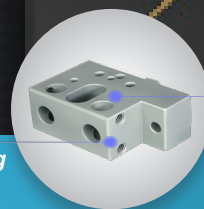
The new DIO Controller is the new standard in entry level HMI applicators. The full feature 2 Channel PID controller gives you full feature including Eco mode, weekly programs, Pump prevention delay all in one board for a flash service...



4 SIZE... 4 USE

Our lineup for Sprint Margherita Series provide 4 different 2 CH tank:

- 3.5 Kg
- 5 Kg
- 8 Kg
- 12 Kg



Corrosion Free

Non Polluting

High Grade Material

Our daily work is combine high performance and cost effective applications. Being a partner means combine every day these factor with a fine engineering to create a the perfect answer to market requirement.



Speed and Pressure

Simple and cleare pressure regulations for precise controlling. The choice of 8:1 pressure ratiogive you a fine tune of your glue pressure. Anyway our group works up to 65 Bar



Amp Connectors

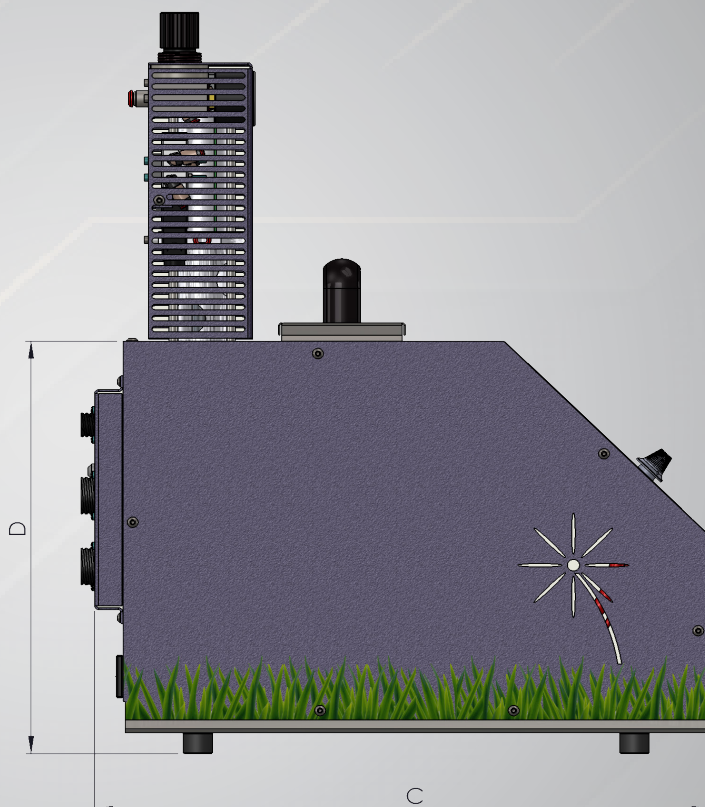
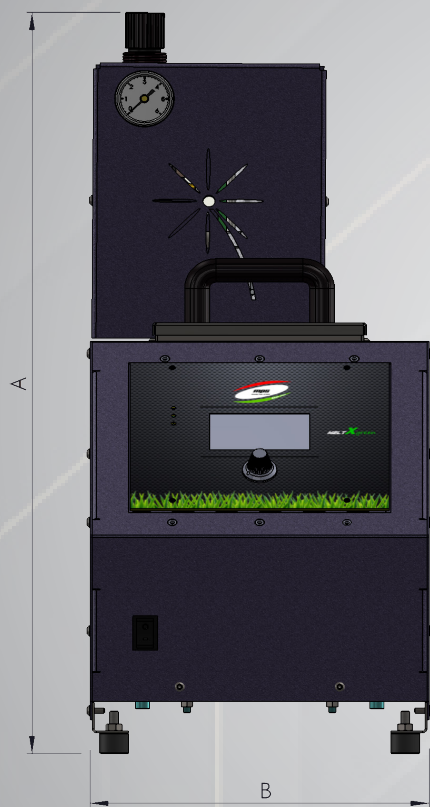
Our systems are oper to world thanks to Amp standard connector and a low poerw 220V supply cable. Enjoy our powerful "Green" machine.



High Tech Filter

A compact Quick in Filter with different available mesh dimension will ensure you long life to pump and hoses.

Invest on filters prevent your systems.



THECNICAL SPECIFICATIONS

VERSION	HMM-M20-03	HMM-M20-05	HMM-M20-08	HMM-M20-12
C X B DIM	425 X 235	425 X 235	575 X 330	575 X 330
A X D DIM	540 X 300	540 X 300	540 X 300	540 X 300
ADESIVE TYPE	Up to 100000 Cps			
WORKING TEMP	45 - 235 °C			
MACHINE WEIGHT	6.5 Kg	11 Kg	15 Kg	20 Kg

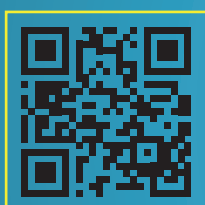
ELECTRICAL SPECIFICATIONS

POWER SUPPLY	220V 16A			
MAX POWER	1.5 KW	1.5 KW	2.5 KW	2.5 KW

PNEUMATIC SPECIFICATIONS

MAX PRESSURE	7 Bar Inlet			
VALVE VOLTAGE	24V			
ADESIVE PRESSURE	65 Bar			
SPEED CYCLE	4000 Cycle / Min			

Copyright 2021 - MPS S.r.l. - All Right Reserved - Data can change without any notice



Visit us:
Meltx.mps-online.it
 Call Us:
 +39 0143 343 595
 Write Us
info@mps-online.it

